

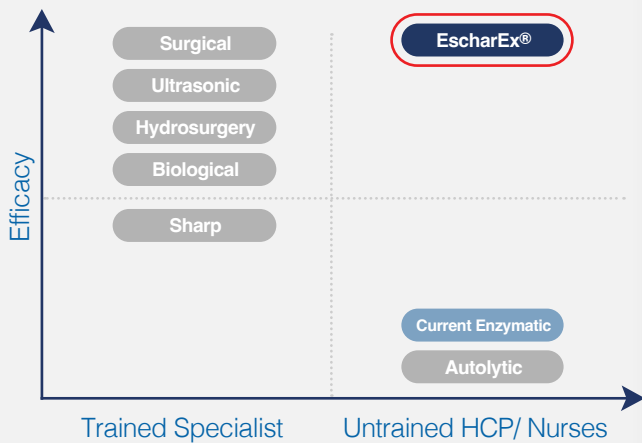
# EscharEx<sup>®</sup>

Rapid, Effective, and Safe Debridement of Chronic Wounds



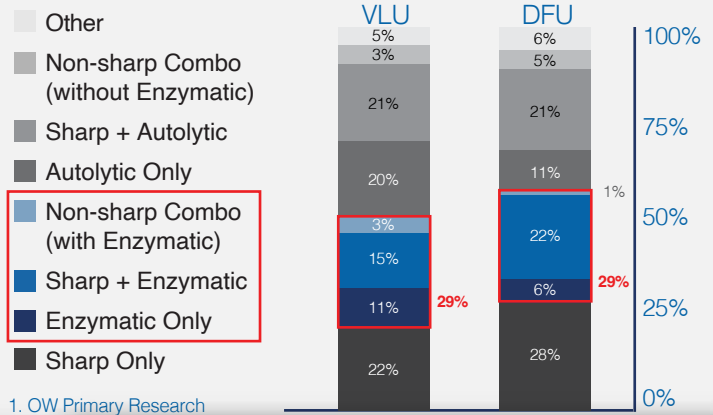
## New SOC Candidate

### Modalities by Efficacy and Complexity



\$2B TAM

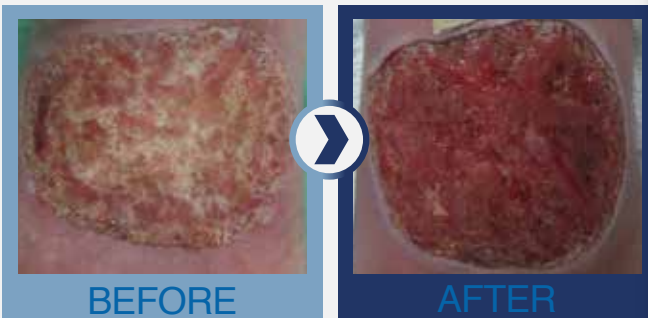
### Modalities by Wound Type (U.S.)<sup>1</sup>



1. OW Primary Research

## Rapid Debridement

**VLU**  
Venous Leg Ulcer



**DFU**  
Diabetic Foot Ulcer



## Highlights

- Investigational drug containing a sterile mixture of proteolytic enzymes
- Debrides chronic wounds in 4-8 applications
- Easy to use topical application for all patient settings
- Promotes healthy granulation tissue, reduces biofilm and bacteria
- Demonstrated superiority over SANTYL<sup>®</sup>
- In line with current treatment and reimbursement practices
- De-risked program, based on successful Phase II studies
- Phase III VLU planned for Q4 2024  
Phase II/III DFU preparation underway
- R&D collaborations with Mölnlycke Solventum, MIMEDX